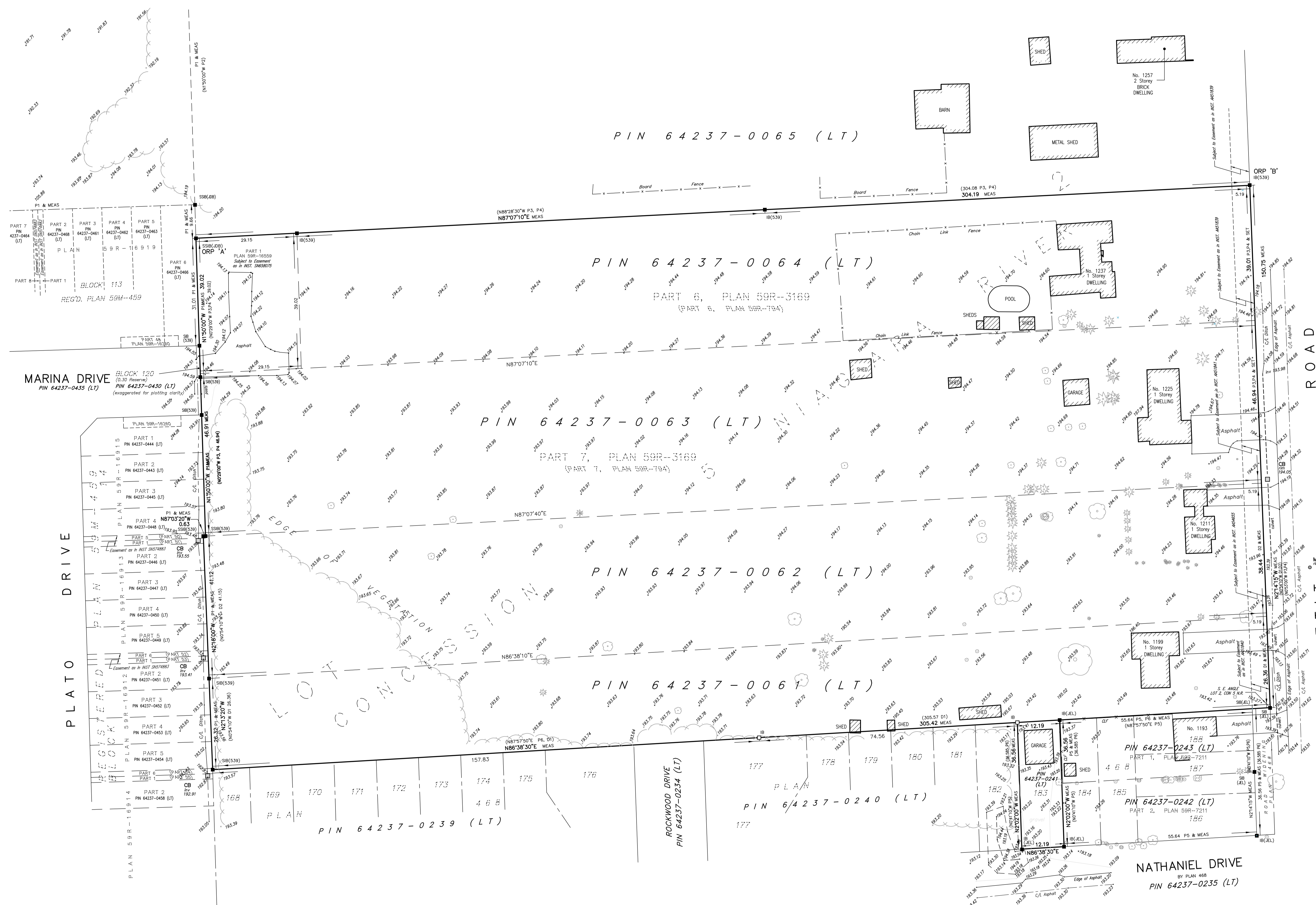


PLAN OF SURVEY OF WITH TOPOGRAPHY
PART OF LOT 2
CONCESSION 5 NIAGARA RIVER
 GEOGRAPHIC TOWNSHIP OF BERTIE
TOWN OF FORT ERIE
 REGIONAL MUNICIPALITY OF NIAGARA

SCALE 1 : 500
 10 5 0 10 20 30 40 metres

Kirkup Mascoe Ure Surveying
 A Division of J.D. Barnes Limited
 ONTARIO LAND SURVEYORS



INTEGRATION DATA		
OBSERVED REFERENCE POINTS (ORP's): UTM ZONE 17, NAD83 (CSRS) (2010.0).		
COORDINATES TO URBAN ACCURACY PER SECTION 14 (2) OF O.REG 216/10.		
POINT ID	EASTING	NORTHING
ORP (A)	665791.93	4752801.69
ORP (B)	666095.71	4752816.93
COORDINATES CANNOT, IN THEMSELVES, BE USED TO RE-ESTABLISH CORNERS OR BOUNDARIES SHOWN ON THIS PLAN.		

NOTES
 BEARINGS ARE UTM GRID, DERIVED FROM OBSERVED REFERENCE POINTS A AND B, BY REAL TIME NETWORK (RTN) OBSERVATIONS, UTM ZONE 17, NAD83 (CSRS)(2010.0).
 DISTANCES ARE GROUND AND CAN BE CONVERTED TO GRID BY MULTIPLYING BY THE COMBINED SCALE FACTOR OF 0.999913

METRIC
 DISTANCES AND COORDINATES SHOWN ON THIS PLAN ARE IN METRES AND CAN BE CONVERTED TO FEET BY DIVIDING BY 0.3048.

LEGEND	
■	DENOTES SURVEY MONUMENT FOUND
□	SURVEY MONUMENT PLANTED
SIB	STANDARD IRON BAR
SSIB	SHORT STANDARD IRON BAR
IB	IRON BAR
CC	CUT CROSS
IP	IRON PIPE
N,S,E,W	NORTH, SOUTH, EAST, WEST
m	MEASURED
meas/m	ORIGIN UNKNOWN
(U)	WITNESS MONUMENT
(WT)	PROPERTY IDENTIFIER NUMBER
PIN	OBSERVED REFERENCE POINT
ORP	D. G. URE, O.L.S.
(539)	J. D. BARNES LTD.
(JDB)	LANTHIER & GILMORE SURVEYING LTD.
(JEL)	NIAGARA RIVER
N.R.	PLAN 59R-459
P1	PLAN 59R-16559
P2	PLAN 59R-3169
P3	PLAN 59R-7211
P4	PLAN 59R-794
P5	PLAN 468
D1	INST R0155333 (PIN 64237-0061 (LT))
D2	INST R016574 (PIN 64237-0062 (LT))
CLF	CHAIN LINK FENCE

SURVEYOR'S CERTIFICATE
 I CERTIFY THAT:
 1. THIS SURVEY AND PLAN ARE CORRECT AND IN ACCORDANCE WITH THE SURVEYOR'S ACT AND THE SURVEYORS ACT AND THE LAND TITLES ACT AND THE REGULATIONS MADE UNDER THEM.
 2. THE SURVEY WAS COMPLETED ON MARCH 1, 2022.
 DATE: APRIL 1, 2023
 ROY S. KIRKUP
 ONTARIO LAND SURVEYOR

THIS PLAN OF SURVEY RELATES TO A.O.L.S. PLAN SUBMISSION FORM # V-6928

Kirkup Mascoe Ure Surveying
 A Division of J.D. Barnes Limited

4318 PORTAGE ROAD, UNIT 2, NIAGARA FALLS, ON L2E6A4
 T: (905) 641-1007 F: (905) 641-4424 www.jdbarnes.com

DRAWN BY: GP	CHECKED BY: RSK	REFERENCE NO.: Z2-49-010-00_1 BdyTopo_sheet 2
PLOTTED: APRIL 1, 2023		DATED: APRIL 1, 2023