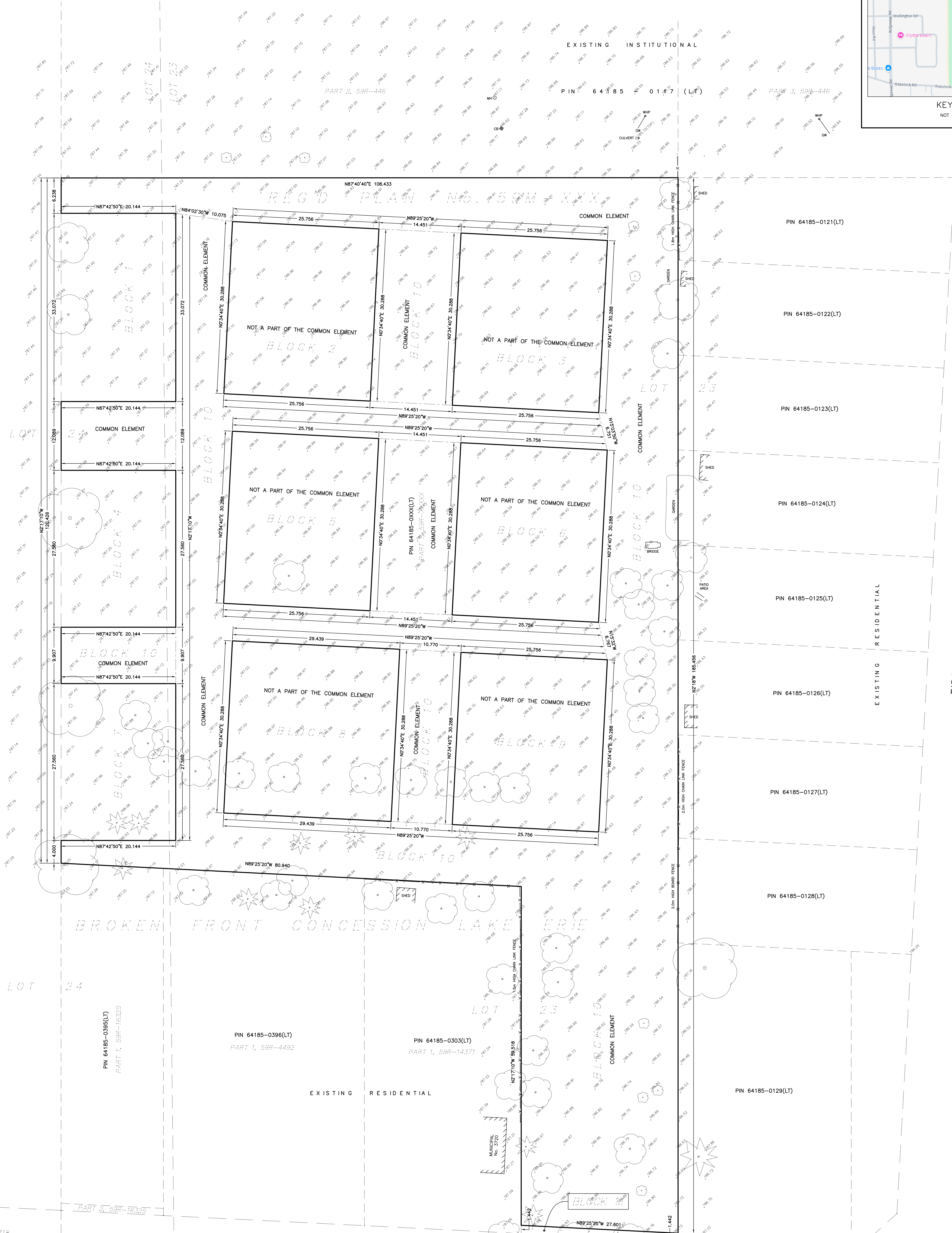
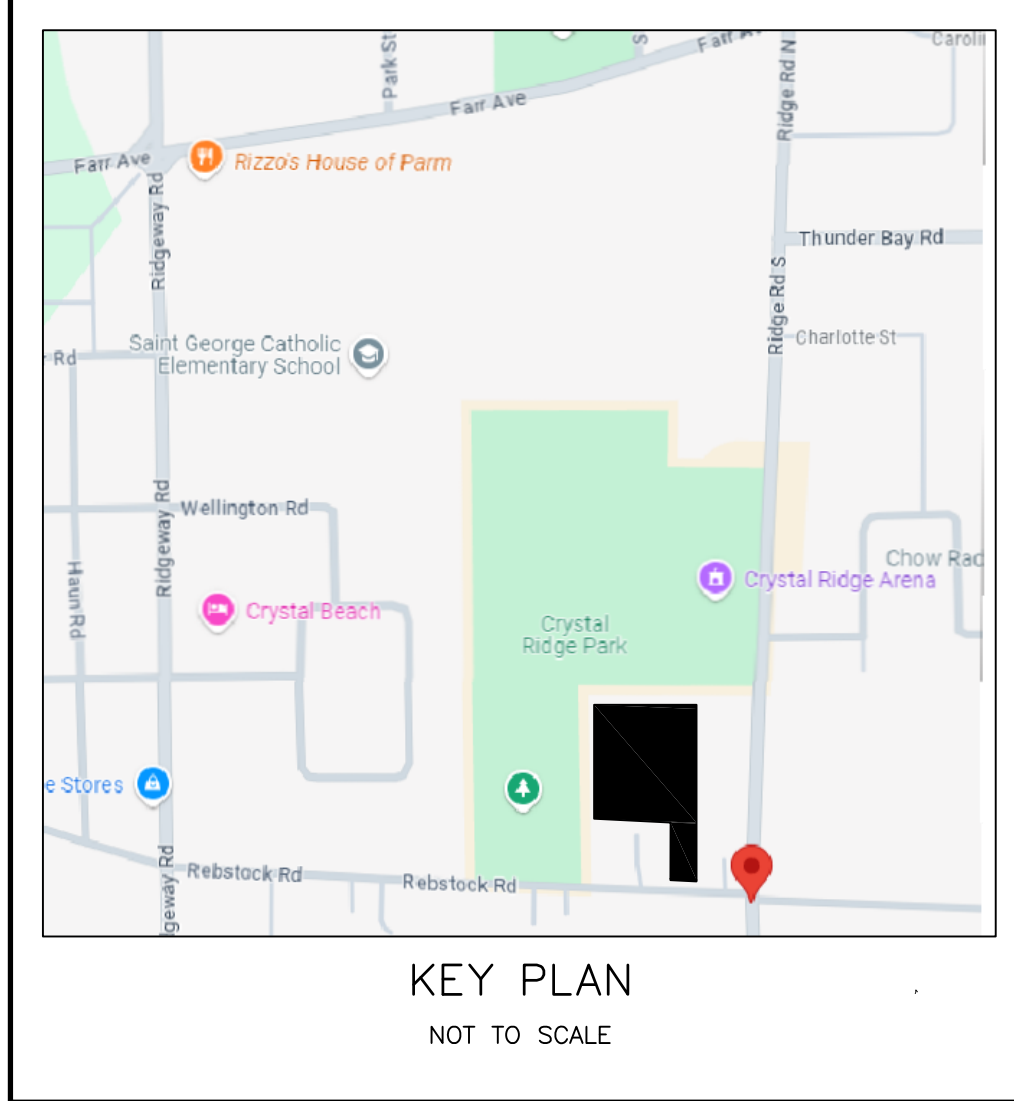


DRAFT PLAN OF COMMON ELEMENT
PART OF LOTS 23 & 24
BROKEN FRONT CONCESSION LAKE ERIE
(GEOGRAPHIC TOWNSHIP OF BERTIE)
TOWN OF FORT ERIE
REGIONAL MUNICIPALITY OF NIAGARA

SCALE 1:250 METRIC
0 5m 10m



**SECTION 51 (17), PLANNING ACT
ADDITIONAL INFORMATION**

A) AS SHOWN ON DRAFT PLAN
B) AS SHOWN ON DRAFT PLAN
C) AS SHOWN ON DRAFT PLAN
D) RESIDENTIAL UNITS
E) AS SHOWN ON DRAFT PLAN
F) AS SHOWN ON DRAFT PLAN
G) AS SHOWN ON DRAFT PLAN
H) MUNICIPAL WATER TO BE MADE AVAILABLE
I) MIXED CLAY AND LOAM
J) AS SHOWN ON DRAFT PLAN
K) ALL MUNICIPAL SERVICES AVAILABLE
L) AS SHOWN ON DRAFT PLAN

METRIC NOTE
DISTANCES SHOWN ON THIS PLAN ARE IN METRES AND CAN BE CONVERTED TO FEET BY DIVIDING BY 0.3048.

OWNER'S CERTIFICATE
I HEREBY CERTIFY THAT 12778602 CANADA INC IS THE OWNER OF THE LAND OUTLINED IN HEAVY LINE ON THE PLAN AND HEREBY AUTHORIZES THE SUBMISSION OF THIS PLAN FOR APPROVAL.

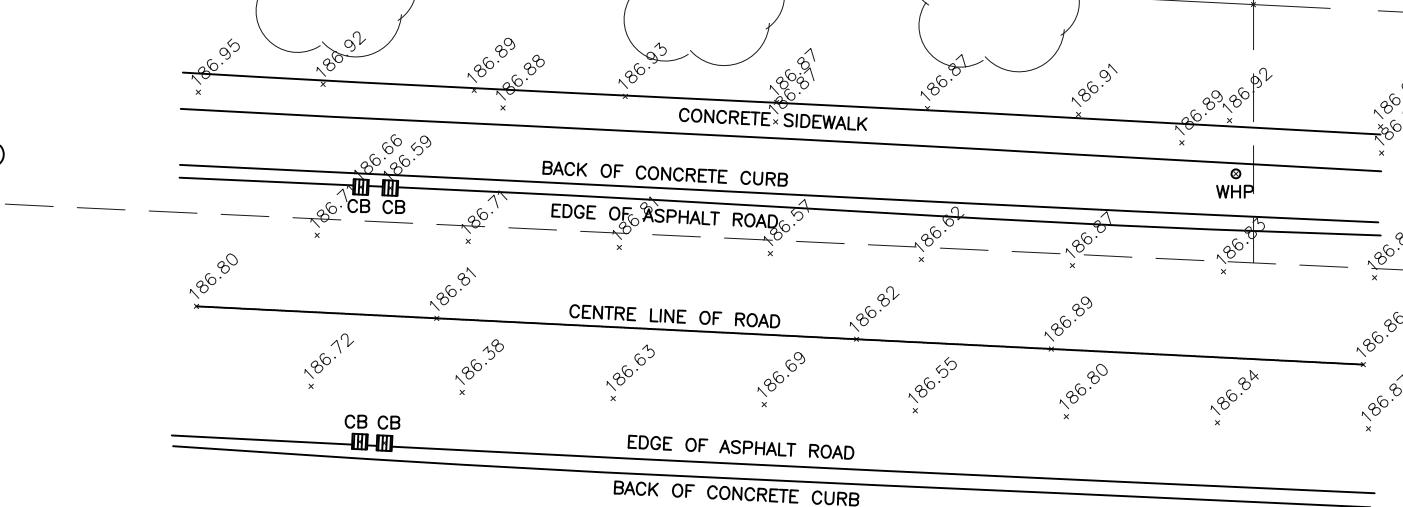
OWNER : 12778602 CANADA INC
SHERARD McQUEEN
PRESIDENT

OCT. 7, 2024
DATE

SURVEYOR'S CERTIFICATE
I HEREBY CERTIFY THAT THE BOUNDARIES OF THE LAND TO BE DEVELOPED AS SHOWN ON THIS PLAN AND THEIR RELATIONSHIP TO THE ADJACENT LANDS ARE CORRECTLY AND ACCURATELY SHOWN.

Brent Larocque
ONTARIO LAND SURVEYOR

OCT. 7, 2024
DATE



THE LAROCQUE GROUP
O.L.S./PROJECT CONSULTANTS/LAND MANAGEMENT
12 LYMAN STREET, ST. CATHARINES, ONTARIO
905-688-1413
6385 COLBORNE STREET, NIAGARA FALLS, ONTARIO
905-358-8400
www.larocquegroup.com

FILE No. : NS1984-345C
DATE : OCTOBER 7, 2024
DWG FILE : NS1984-345C-16