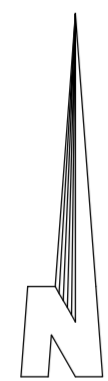


BLOCK 9
(DAYLIGHTING)

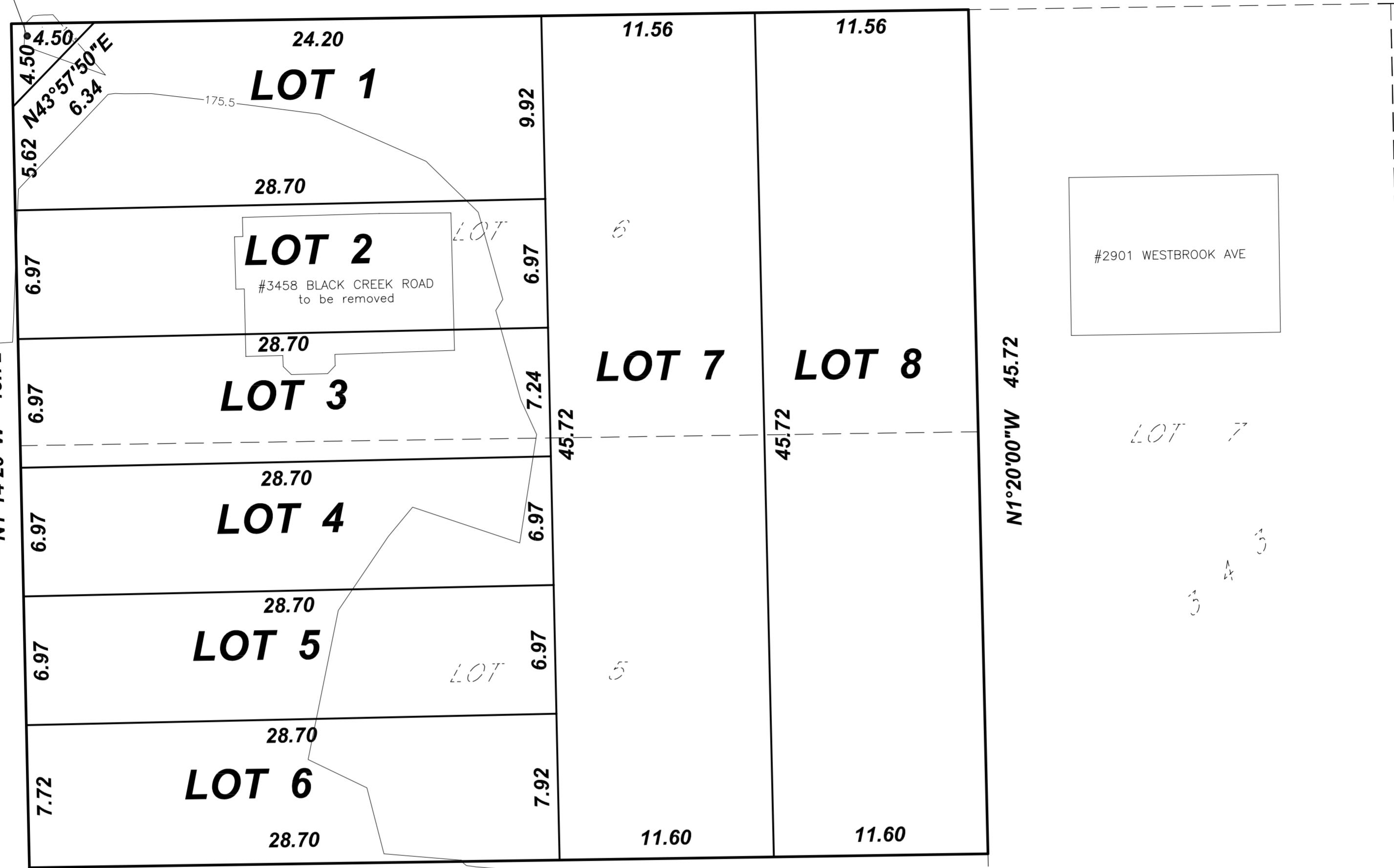
BLACK CREEK ROAD

20.12 WIDE



WESTBROOK AVENUE

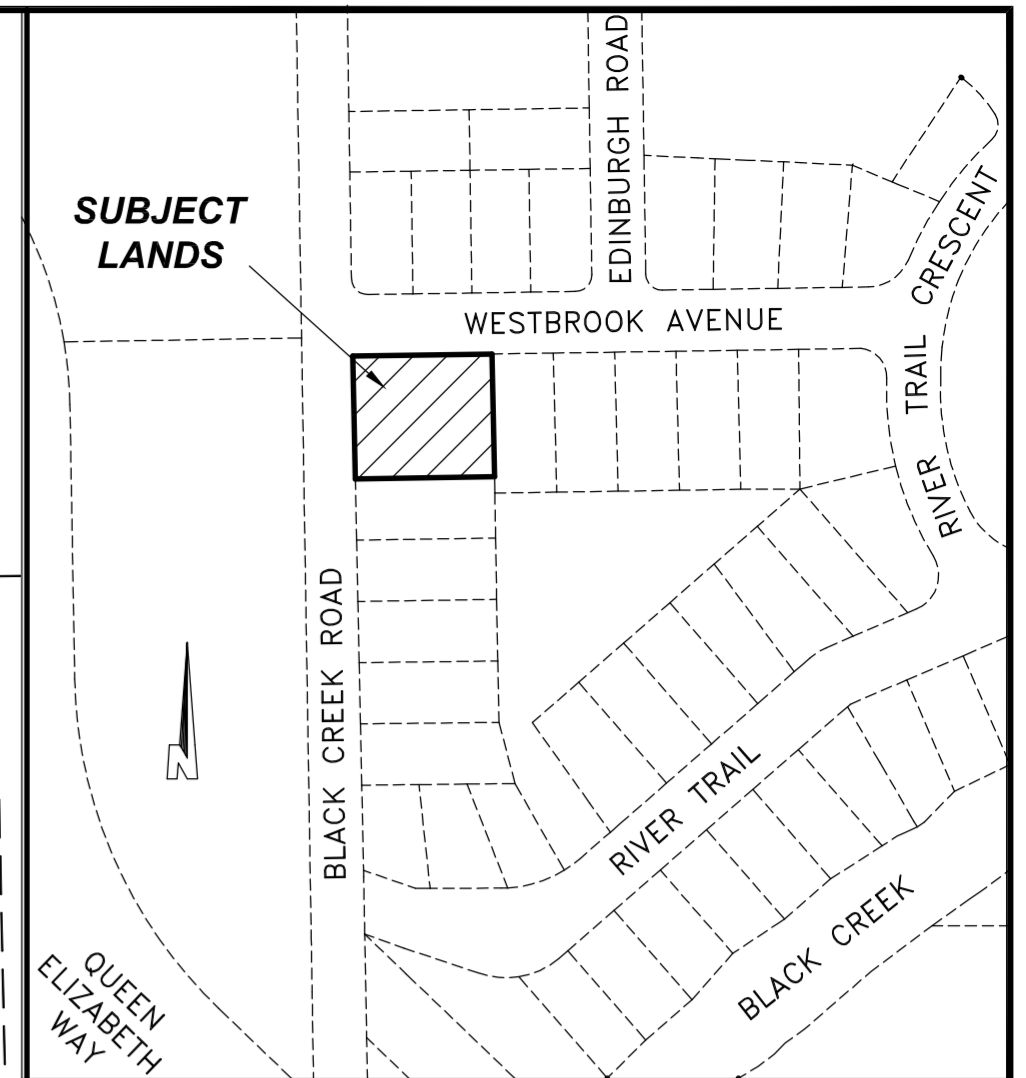
22.86 WIDE



NOTE:
SUBJECT AND ABUTTING LAND USE - RESIDENTIAL

LAND USE SCHEDULE

LAND USE	# OF UNITS	AREA(m ²)	AREA(%)
TOWNHOUSE DWELLINGS	6	1302.0m ²	54.9%
SEMI DETACHED DWELLINGS	2	1058.6m ²	44.7%
DAYLIGHTING	0	10.1m ²	0.4%
TOTAL	8	2370.7m²	100%



KEY PLAN
NOT TO SCALE

DRAFT PLAN OF SUBDIVISION
LOTS 5 & 6
ALL ON PLAN 343
TOWN OF FORT ERIE
REGIONAL MUNICIPALITY OF NIAGARA

SCALE 1 : 200
0 1 2 3 4 5 10 20 METRES

DONALD G. CHAMBERS
ONTARIO LAND SURVEYOR

METRIC NOTE
DISTANCES SHOWN ON THIS PLAN ARE IN METRES AND CAN BE CONVERTED TO FEET BY DIVIDING BY 0.3048.

DRAFT SUBDIVISION

Subject to the conditions, if any, set forth in our letter dated _____, 20__ this draft plan is approved under Section _____ of the Planning Act.

This _____ day of _____, 20__

Authorized Signature

THE CORPORATION OF THE TOWN OF FORT ERIE

ADDITIONAL INFORMATION REQUIRED UNDER SECTION 51(17) OF THE PLANNING ACT.

- a) SEE PLAN
- b) SEE PLAN
- c) SEE PLAN
- d) SEE PLAN
- e) SEE PLAN
- f) SEE PLAN
- g) SEE PLAN
- h) MUNICIPAL WATER
- i) SANDY LOAM
- j) SEE PLAN
- k) FULL SERVICE
- l) NONE

OWNER'S CERTIFICATE

WE HEREBY CERTIFY THAT WE ARE THE OWNER'S OF THE LANDS AS SHOWN.

I HAVE THE AUTHORITY TO BIND THE CORPORATION.

DATE _____ JEFF DAVIS - C.E.T., PARTNER, C.E.O.
CRYSTAL RIDGE HOMES

REVISIONS

Rev #	REVISION	Date
0	FINAL SUBMISSION	2 NOV/22
1	COMMENTS FROM THE TOWN	24 JULY/23

SURVEYOR'S CERTIFICATE

I HEREBY CERTIFY THAT THE BOUNDARIES OF THE LANDS AS SHOWN ON THIS PLAN AND THEIR RELATIONSHIP TO THE ADJACENT LANDS ARE CORRECTLY SHOWN.

NOVEMBER 7, 2022
DATE _____ DONALD G. CHAMBERS B. Sc., O.L.S.

CHAMBERS AND ASSOCIATES SURVEYING LTD

12 THOROLD ROAD EAST (905) 735-7841 / 735-7844
WELLAND ONTARIO FAX (905) 735-7333
L3C 3T2 www.casl-surveying.com